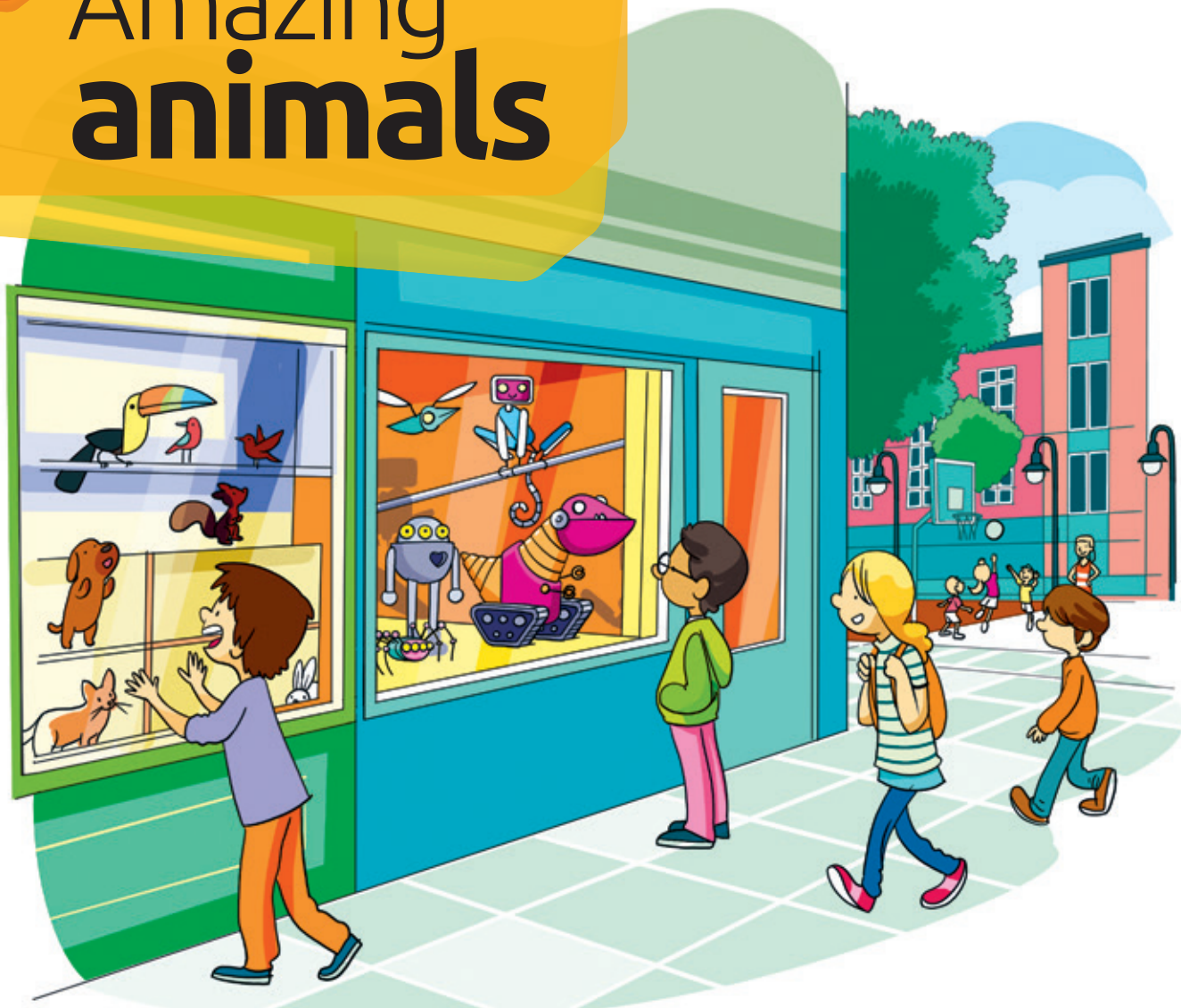


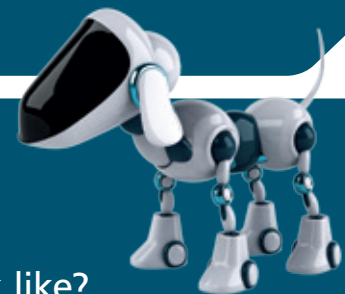
Amazing animals



1 Next is comparing the robotic and non-robotic pets. Put him in the correct place.



We can keep some animals as pets, but did you know robots can be pets too?



- 2** Do you have a robot pet? What animal does it look like?
- 3** Do you think it is important to look after pets properly? Why?
- 4** What are the differences between robot pets and live pets? Which do you prefer? Why?

Exploring **animals**

With this class mat and Next you are going to discover:

- Aquatic and terrestrial animals.
- Vertebrate and invertebrate animals.
- Oviparous and viviparous animals.



Look carefully at the mat.



1 Are these animals aquatic or terrestrial? Draw arrows.



Aquatic

Terrestrial

Classification of animals



Animals are divided into two large groups: **vertebrates** and **invertebrates**. They can be **viviparous**, if they give birth to live young, or **oviparous**, if they lay eggs. Depending on where they live, they can be **aquatic** or **terrestrial**.

1 Tick the correct box for each animal.



☐ Vertebrate
☐ Invertebrate



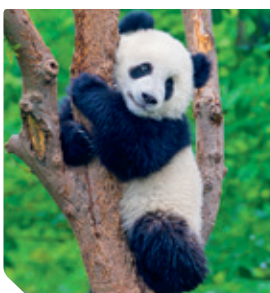
☐ Vertebrate
☐ Invertebrate



☐ Terrestrial
☐ Aquatic



☐ Terrestrial
☐ Aquatic



☐ Oviparous
☐ Viviparous



☐ Oviparous
☐ Viviparous

➤ On the picture of the mat on the previous page, circle the vertebrates in one colour and the invertebrates in another.

What do they **eat**?



Depending on what they eat, animals can be **herbivores**, **carnivores** or **omnivores**.



- 1 Complete the sentences and program Next to match each animal to the food it eats. Add a pause if Next passes another food on his route.

Wolves are .

Cows are .

Humans are .

REMEMBER



If you connect Next to your tablet, you can select the length of the pause you add to the program.



First mission: Delivering eggs



Some animals have lost their eggs. Help me return them!



- 1 Program Next to share out the eggs between the oviparous animals. Make sure Next visits the animals in alphabetical order.

butterfly



salamander



seagull



fish



From



To

1.°



From



To

2.°



From



To

3.°



From



To

4.°



Second mission: Visit to the vet

I've found three injured animals and I must take them to the vet.


1 Which animals has Next found? Program him to take them to the vet. Start on the box containing each animal.

➤ Terrestrial, viviparous herbivore.

➤ Aquatic, oviparous omnivore.

➤ Terrestrial, viviparous carnivore.

CONNECT WITH NEXT! [🔌]



Use your tablet's bluetooth to program Next to return the eggs and take the animals to the vet.

TASKS	📄	📄
I programmed Next to deliver the eggs.		
I programmed Next to take the animals to the vet.		
I connected to Next and programmed him via the tablet.		